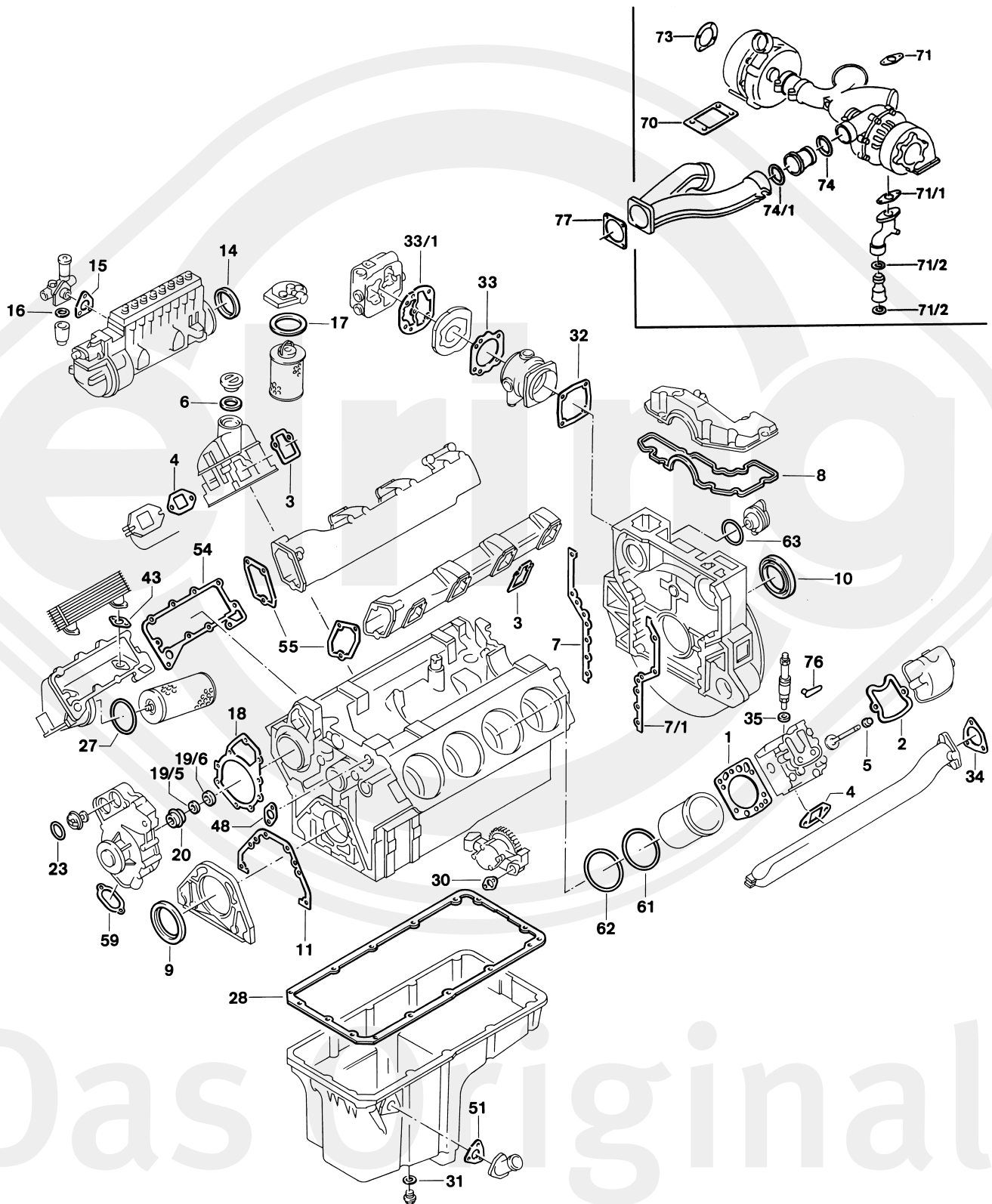




Das Original

Mercedes-Benz

OM 402 A | LA



Das Original



402.901 | 970-975 | 977 | 978 | 982-987 | 989 | 990 | 995 | 996

			#	  	
S ⊕*	914.975	1x	-	-	 896.510   
ES	812.544	8x	444 010 01 20	-	 896.510
ES	812.545	8x	444 010 01 20	-	 412.180
ES ⊕	812.529	8x	-	-	 748.080
ES ⊕	413.810	8x	-	-	 896.510    562.298
ES ⊕	570.282	8x	-	-	 896.510    391.190
CS *	812.579	1x	422 010 06 08	-	
ZLBS	542.370	8x	-	-	 Ø 145,8 mm →  535118
ZLBS	542.380	8x	-	-	 Ø 145,8 mm   incl. 703.214
WPS	812.617	1x	422 200 09 01	-	Ø 15 mm
SZ	812.552	1x	423 010 48 33	-	
ZKS	820.091	8x	-	M15x2x109 M15x2x144 M15x2x168	-
1	748.080	8x	422 016 06 20	Ø 143,5 mm   $\frac{\text{H}}{\text{h}}$ 1,23 mm	-
1	748.110	8x	422 016 07 20	Ø 143,5 mm   $\frac{\text{H}}{\text{h}}$ 1,33 mm   2 ▽	-
1	896.510	8x	442 016 03 20	Ø 143,5 mm   $\frac{\text{H}}{\text{h}}$ 1,25 mm	galvanized/verzinkt
1	412.180	8x	442 016 04 20	Ø 143,5 mm   $\frac{\text{H}}{\text{h}}$ 1,25 mm	stainless steel/Edelstahl
2	977.438	8x	442 016 06 21	-	-
3	896.365	8x	442 141 17 80	-	-
4	225.126	8x	403 142 03 80	-	-
5	562.298	16x	422 053 01 96	12x15,7/20x15 FPM	-
5	391.190	16x	403 053 01 96	12x15,7/20x15 AEM	-
7	819.191	1x	442 015 01 80	-	-
7/1	819.205	1x	442 015 00 80	-	-
8	759.139	1x	442 015 00 60	-	-
9	524.973	1x	014 997 46 47	105x130x12 AW/BS RD FPM	 476.070
9	766.853	1x	-	105x130x12 AW/BS RD PTFE/ACM	 476.070
9	369.901	1x	025 997 39 47	100x130x11 ASW RD PTFE/ACM	-











402.901 | 970-975 | 977 | 978 | 982-987 | 989 | 990 | 995 | 996

			#		
10	562.920	1x	013 997 14 47	120x140x13 AW/BS LD FPM	 834.289
10	766.829	1x	-	120x140x13 AW/BS LD PTFE/ACM	 834.289
10	354.090	1x	025 997 50 47	115x140x12 ASW LD PTFE/ACM	-
11	756.769	1x	442 011 00 80	-	-
14	759.147	1x	442 074 00 59	94,5x105,3x9 ACM PR	-
15		1x	001 074 22 80	-	-
16	716.200	1x	000 997 00 40	28x36x2 NBR A	-
17	733.431	2x	000 477 31 80	95x103x3 NBR A	-
18	756.882	1x	442 201 00 80	-	-
20	577.804	1x	001 201 19 19	-	-
23	495.980	2x	024 997 28 48	58,5x67,5x4,3 EPDM	-
27	780.103	1x	008 997 70 45	134x4 NBR RD	-
28	765.718	1x	442 014 02 22	-	
30	759.300	1x	917003 036003	-	-
31	031.046	1x	007603 026109	26x34x2 CU A	-
32	374.690	1x	442 131 27 80	-	-
33	773.204	1x	442 131 06 80	-	-
33/1	137.452	1x	442 131 29 80	-	-
34	778.061	2x	442 492 00 80	-	-
35	106.909	8x	346 017 01 60	9,5x20x1 CU A	-
35	067.989	8x	346 017 02 60	9,5x20x1,5 CU A	-
43	759.296	2x	917003 026003	-	-
51	756.785	1x	442 018 00 80	-	-
54	765.735	1x	442 188 05 80	-	-
55	764.485	2x	442 141 09 80	-	-
59	768.392	1x	442 201 04 80	-	
59	463.250	1x	000 201 10 80	-	
59	680.271	1x	000 201 12 80	-	
61	538.120	8x	025 997 84 48	140x1,9 FPM RD	-
61/1	703.214	8x	442 011 00 59	147,4x153,5x0,15 A	-



402.901 | 970-975 | 977 | 978 | 982-987 | 989 | 990 | 995 | 996

				  	
61/1	<b>863.020</b>	8x	-	147,4x153,5x0,25 A	-
61/1	<b>896.455</b>	8x	442 011 02 59	147,4x153,5x0,50 A	-
62	<b>538.090</b>	16x	025 997 85 48	144x3,8 FPM RD	 Ø 145,8 mm
63	<b>102.032</b>	1x	014 997 61 48	78x3 NBR RD	-
70	<b>279.455</b>	2x	422 142 00 80	-	-
71	<b>756.874</b>	2x	442 187 01 80	-	-
71/1	<b>756.866</b>	2x	442 187 00 80	-	-
71/2	<b>599.247</b>	4x	422 997 00 40	22,9x31,5x5,9 FPM PR	-
73	<b>285.226</b>	2x	422 144 02 80	-	-
74	<b>345.326</b>	2x	006 997 48 48	45x8 VMQ RD	-
74/1	<b>345.326</b>	2x	006 997 48 48	45x8 VMQ RD	-
76	<b>558.060</b>	8x	403 016 00 61	-	-
77	<b>764.485</b>	1x	442 141 09 80	-	-