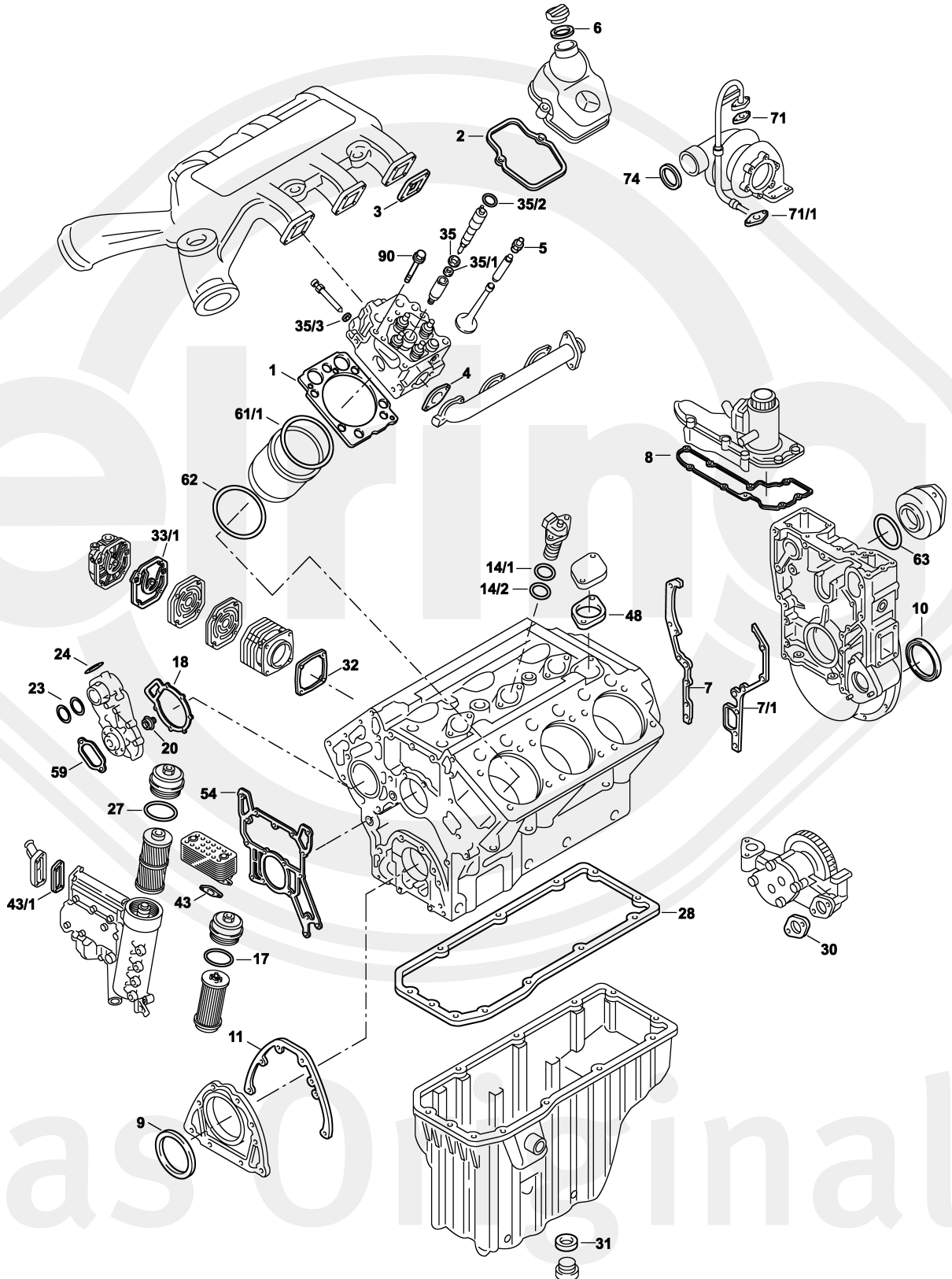




Das Original

Mercedes-Benz

OM 501 A | LA

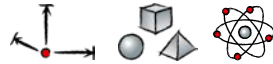




521.940 | 950 | 951 | 952

541.920-999

941.900 | 910 | 920 | 921 | 929 | 930 | 940 | 960 | 970 | 980 | 981 | 990 | 991



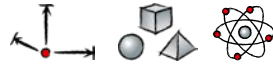
S ⊕*	166.130	1x	-	-	-	→ 012090 052.481
S ⊕*	166.340	1x	-	-	-	012091 → 084423 052.481
S ⊕*	583.130	1x	-	-	-	084424 → 155295 052.481
S ⊕*	583.150	1x	-	-	-	155296 → 357748 052.481
S ⊕*	529.730	1x	-	-	-	357749 → 066.723
ES	447.215	6x	541 010 51 20	-	-	→ 084423 052.481
ES	711.444	6x	541 010 52 20	-	-	084424 → 155295 052.481
ES	001.832	6x	457 010 62 20	-	-	155296 → 357748 052.481
ES	290.400	6x	-	-	-	357749 → 066.723
ES ⊕	154.200	6x	-	-	-	→ 084423 052.481
CS *	447.221	1x	541 010 02 05	-	-	→ 012090
CS *	470.311	1x	541 010 05 05	-	-	012091 → 089.131
CS *	438.930	1x	541 010 05 05	-	-	089132 →
ZLBS	722.480	6x	-	-	-	-
WPS	469.701	1x	542 200 07 01	-	-	-
SZ	633.360	1x	541 010 09 33	-	-	-
SZ	382.900	1x	541 015 16 80	-	-	-
SZ	066.460	6x	906 017 02 60	-	-	incl. 000.230/074.870/124.870



521.940 | 950 | 951

541.920-928 | 940-953 | 959 | 970 | 981 | 990-995

941.900 | 910 | 920 | 921 | 929 | 930 | 940 | 960 | 970 | 980 | 981 | 990 | 991



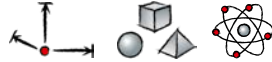
SZ	295.050	6x	906 017 08 60	–	incl. 000.230/074.870/835.160
TLS	715.331	1x	–	–	–
LPS	354.170	1x	–	–	–
ZKS	060.220	6x	–	M18x2x210	–
1	052.481	6x	541 016 11 20	∅ 150,4 mm $\pm 1,25$ mm	→ 357748
1	066.723	6x	541 016 13 20	∅ 150,4 mm $\pm 1,25$ mm	357749 →
2	060.560	6x	541 016 03 21	–	→ 084423
2	711.420	6x	541 016 04 21	–	084424 → 155295
2	001.796	6x	457 016 02 21	–	155296 →
3	470.290	6x	541 098 04 80	–	–
4	432.040	6x	541 142 01 80	–	–
5	567.401	24x	000 053 53 58	9x12/15x11,6 FPM	–
6		1x	111 018 00 80	47,5x59x2,3 HNBR A	–
7	133.320	1x	541 015 11 80	–	–
7/1	133.330	1x	541 015 12 80	–	–
8	470.300	1x	541 015 01 60	–	→ 089131
8	152.260	1x	541 015 13 80	–	089132 →
9	524.973	1x	014 997 46 47	105x130x12 AW/BS RD FPM	476.070
9	766.853	1x	–	105x130x12 AW/BS RD PTFE/ACM	476.070
9	369.901	1x	025 997 39 47	100x130x11 ASW RD PTFE/ACM	–
10	562.920	1x	013 997 14 47	120x140x13 AW/BS LD FPM	834.289
10	766.829	1x	–	120x140x13 AW/BS LD PTFE/ACM	834.289
10	354.090	1x	025 997 50 47	115x140x12 ASW LD PTFE/ACM	–
11	690.331	1x	541 011 00 80	EWP/soft material	–
11	075.913	1x	541 011 01 80	Metaloseal	–
14/1	152.610	6x	023 997 64 48	47x2,5 FPM RD	–
14/2	152.630	6x	023 997 65 48	45x2,5 FPM RD	–
17		1x	022 997 89 48	–	–
18	804.260	1x	542 201 01 80	–	–
20	577.804	1x	001 201 19 19	–	–
23	495.980	2x	024 997 28 48	58,5x67,5x4,3 EPDM PR	–



521.940 | 950 | 951

541.920-928 | 940-953 | 959 | 970 | 981 | 990-995

941.900 | 910 | 920 | 921 | 929 | 930 | 940 | 960 | 970 | 980 | 981 | 990 | 991



24		1x	942 501 00 80	-	-
27	-	1x	021 997 27 48	-	-
28	445.981	1x	541 014 03 22	-	-> 012090 AL
28	076.180	1x	541 014 07 22	-	012091 -> PLASTIC
28	714.240	1x	541 014 08 22	-	PLASTIC
30	759.300	1x	917003 036003	-	-
31	125.105	1x	007603 020103	20x26x1,5 CU A	-
31	128.503	1x	000000 001085	22x27x1,5 CU A	-
31	133.400	1x	007603 026101	26x32x2 CU A	-
31	000.230	1x	-	20,9x3 FPM RD	-
32	452.022	2x	541 131 07 80	-	-
33/1	401.652	1x	541 131 09 80	-	-
35	124.870	6x	906 017 02 60	7x15,1x1,5 CU PR	-
35	535.160	6x	906 017 08 60	7x14,9x17,4 CU PR	-
35/1	074.870	6x	541 997 07 45	25x3,7 FPM RD	-
35/2	000.230	6x	541 997 05 45	20,9x3 FPM RD	-
35/3	761.559	6x	541 997 06 45	11x3 FPM RD	-
43		2x	917003 028002	-	-
43/1	-	1x	541 188 00 80	-	-
48	207.410	1x	541 201 01 80	-	-
54	052.351	1x	541 184 09 80	-	-
59		1x	942 501 00 80	-	-
61/1	162.050	6x	541 011 00 59	153,3x163,7x0,15 A	-
61/1	153.371	6x	541 011 04 59	153,4x164,1x0,15 A	-
62	722.470	12x	541 997 17 45	150x4,8 FPM RD	-
63	748.501	1x	005 997 19 45	92x3 NBR RD	-> 064475
71	756.874	1x	442 187 01 80	-	-
71/1	756.866	1x	442 187 00 80	EWP/soft material	-
71/1	527.090	1x	541 187 00 80	Metaloseal	-
74	249.220	2x	024 997 16 48	54x8 FPM RD	-
90	060.220	6x	541 990 05 01	M18x2x210	-