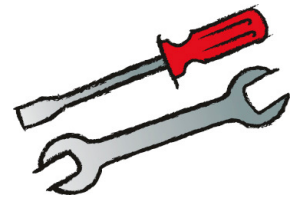




Das Original

TSI 13/10



Tips from the gasket expert Professional installation turbocharger

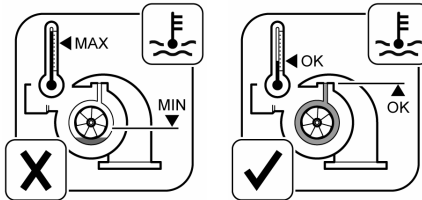


Installation by qualified personnel only.

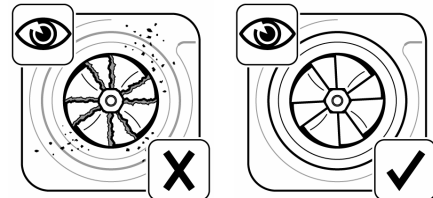


Before installing a new turbocharger, determine why the previous turbocharger failed and take the necessary steps to correct the problem.

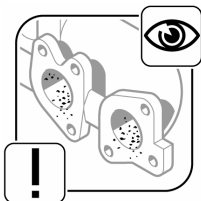
Insufficient oil and overheating



Foreign objects in the turbocharger



Foreign objects in the exhaust manifold

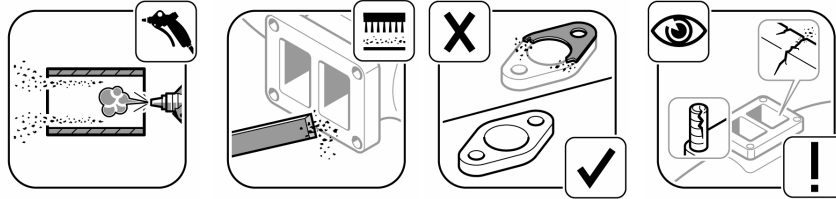


Engine speed (rpm) too high

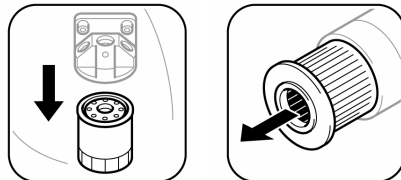




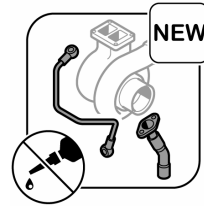
1. Clean the intake duct, charge air pipe and exhaust manifold and check for leak tightness. The flanges and thread must not be worn or damaged.



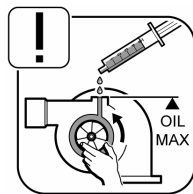
2. Change the engine oil and replace the oil filter and air filter.



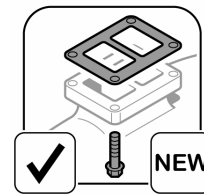
3. Replace the turbocharger oil supply lines. Never use liquid sealant during the installation procedure.



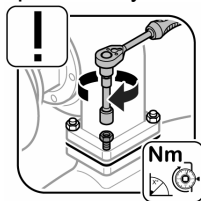
4. Before installation, fill the new turbocharger with engine oil. Rotate the turbine wheel slightly while doing so.



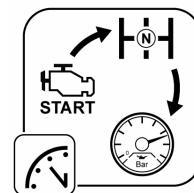
5. Use new gaskets and bolts from Elring when installing the turbocharger.



6. Tighten the bolts in the sequence specified by the manufacturer.



7. After completing the turbocharger installation, start the engine and let it run at idle speed until the oil pressure is built up.



8. Check all fittings and connections for leak tightness.

